



Consulting Automation

Achieve World Class Operational Excellence

- Do you use data or real time actionable intelligence to make operational decisions?*
- Can you consistently run your plant at the highest level of efficiency and productivity?*
- How do you track operational performance?*
- How can you eliminate the gap between the shop floor and the top floor?*

Operational excellence means achieving the business goals with minimal resources. In order to survive in today's competitive global market, organizations need to reduce production cost and cycle time and environmental impact, while maintaining and improving quality, customer delivery and satisfaction. So, how can you empower personnel with real-time automated information to reach operational excellence?

Manufacturing Execution System Suite, a constraint/bottleneck analysis, SAP ME/MII platform based solution, creates a strategic advantage by closing the gap from the shop floor to the top floor, quickly integrating disparate plant floor systems and delivering real-time, role based information for operations and management.

Whether you deploy **one module at a time** or **the complete suite**, this solution empowers the appropriate personnel to gain complete real time visibility into operational performance, asset utilization, quality, energy management, production dynamics and much more; helping **accelerate performance** to achieve world class operational excellence.

Manufacturing Execution System (MES) Suite

World Class Operational Excellence

Real-time | Accurate | Global Visibility

Overall Equipment Effectiveness	Track and Trace	Quality (SPC/SQC) Management Information	Energy Management Information
Predictive and Condition Based Maintenance	Paperless Manufacturing	Part Serilization	Labor Performance Tracking
Constraint/Bottleneck Analysis	Plant and Schedule (WIP) Adherence	Andon Systems	Batch Management Information

Quality (SPC/SQC) Management Information

Optimizes the quality strategy deployment with real-time actionable intelligence to trigger Corrective and Preventative Action (CAPA) and assist with HACCP compliance.

- Real-Time Connectivity to Plant-Floor Quality Data.
- **Automatic and manual real time data recording of all quality measurements as they occur**, delivering granular trend information to identify non-conformance production sooner.
- Bi-directional **integration to SAP QM and QIM**.
- Real time information visibility, alerts and reporting.

- Empower manufacturing personnel with actionable intelligence **dashboards & immediate e-mail alerts**



Energy Management Information

Holistic energy management solution that looks at “**energy as a raw material**”, with real time energy intensity visibility

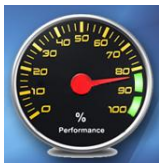
- **Dynamic Energy Targets**, based on regression of influencing factors.
- Energy analysis, reports and **cost allocation**.
- Compliance with ISO50001/SEP/Better Plants Program.
- **Real Time Email Alerts** to excessive energy usage leading to and cost reduction.
- Accelerate **asset decommissioning** based on energy profiles.
- **Utility Billing Reconciliation** to A/Payable.
- Carbon Reporting from Energy.
- Water Consumption and Title V Emissions Mgmt.



Overall Equipment Effectiveness

Provides real time OEE visibility and immediate email alerts based on breach of OEE target set points.

- Trending and drill down into each of the individual metrics
- **Availability** - % of scheduled time that the operation is available to operate.
- **Performance** - speed at which the Work Center runs as a % of its designed speed.
- **Quality** - Good Units produced as a % of Total Units Started.



Paperless Manufacturing

Eliminate paperwork from the shop floor with this ERP – Shop Floor solution.

- **Download and review WO's, Production Schedules and customer information prior to pushing it to Shop Floor execution assets.**
- Operator can view any type of electronic document, product specifications, inspection or setup instructions, etc.
- Order overview and current order progress.
- Product label printing with customer specific requirements.



Track and Trace, FDA FSMA (Traceability)

In a recall situation, you need quick access to critical historical electronic records to identify affected products within a required timeframe. The solution maintains information with FDA 21 CFR Part 11 compliance when needed for all manufacturing transactions. We also create/maintain certificates and allow records to be transferred to other business entities automatically.

Predictive and Condition Based Maintenance

This solution is designed to help production and maintenance personnel predict **which maintenance operations are truly necessary** and when to schedule them without significant production disturbances.

Asset condition based monitoring, runtime and duty cycle tracking can drastically optimize maintenance operations which have the primary goal of ensuring process reliability and high asset utilization.

Batch Management Information

Drive the ideal golden batch on a repeated basis. Download and confirm **master recipe procedures, process steps, materials and standards are being executed for each unique product/customer.**

Labor Performance Tracking

Automatically **identify and assign all labor** with production activities, work orders, SKU's, etc. As well provide time and attendance information to HR and Payroll.

Andon Systems

Provides plant-wide status overview via visual indication of process/work center performance.

Production and Schedule (WIP) Adherence

Immediately identify **Work In Process** to the production schedule plan.

Constraint / Bottle Analysis

Provides Machine and Production Line real time analysis, enabling the identification of production performance hindrances. Identification of such things as “blocked” or “starved” situations between equipment.

Part Serialization

Provides foundational shop floor communications. Serializes production while capturing associated manufacturing production parameters.

For additional information please contact us:

Website www.rtsperfectplant.com

USA-Canada-Brazil | (416) 798-2511 | info_mii@rtsperfectplant.com